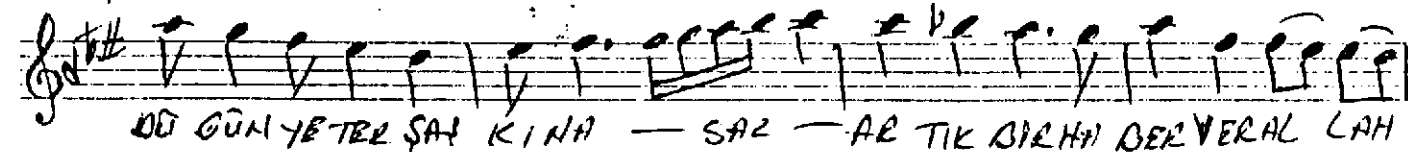
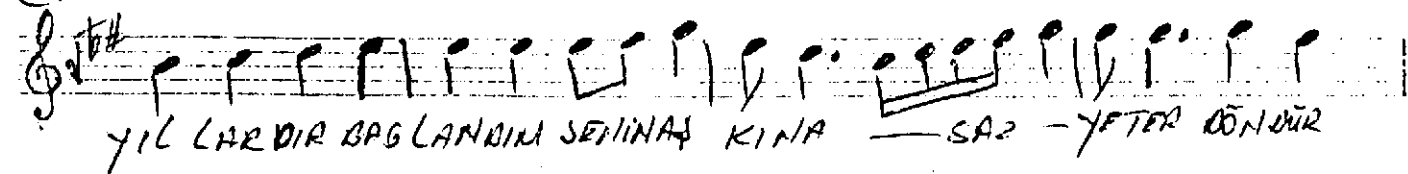
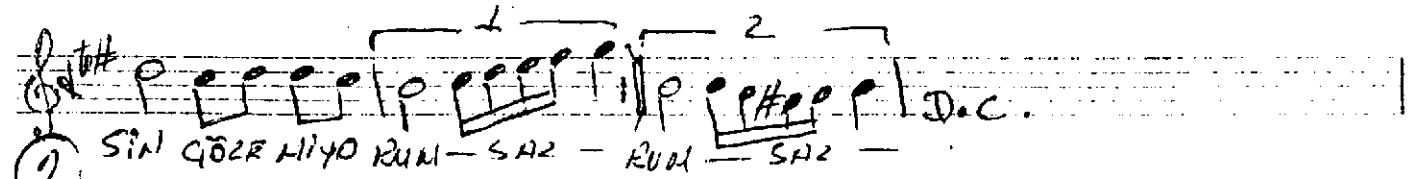
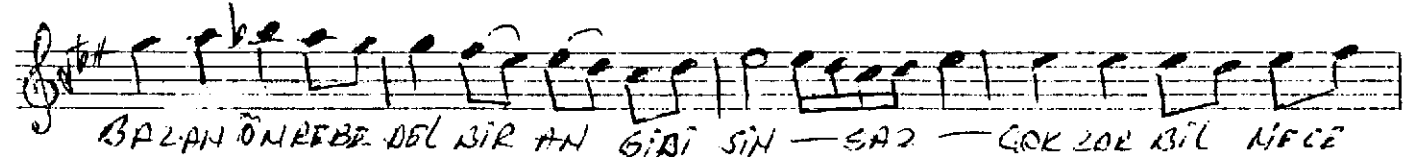
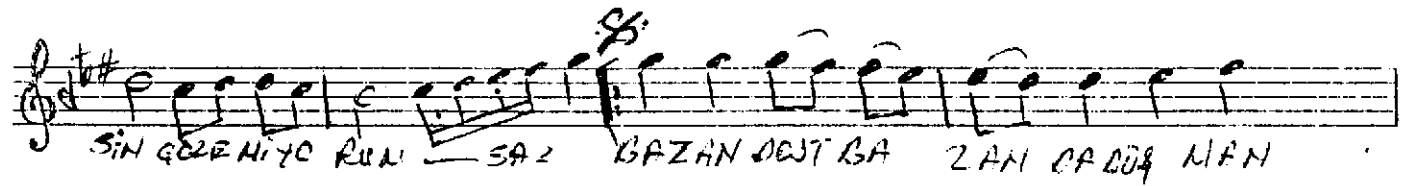
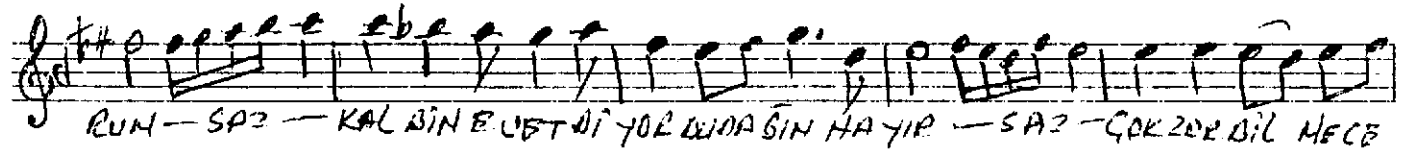
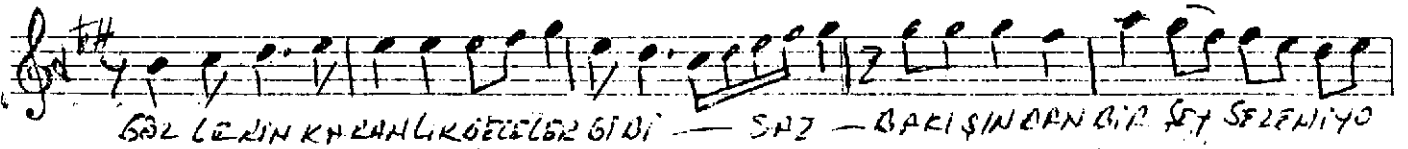
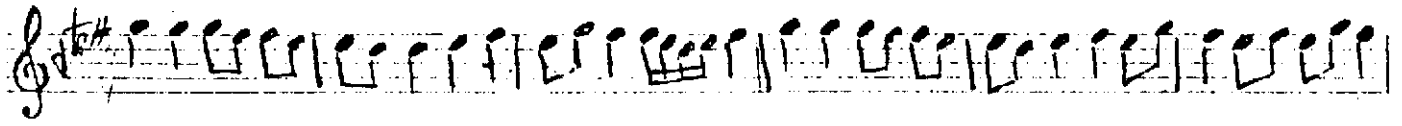


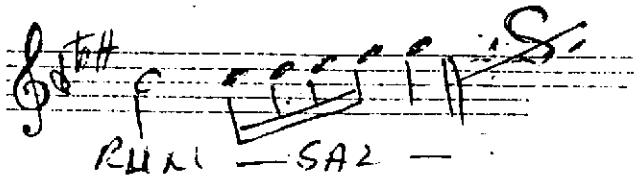
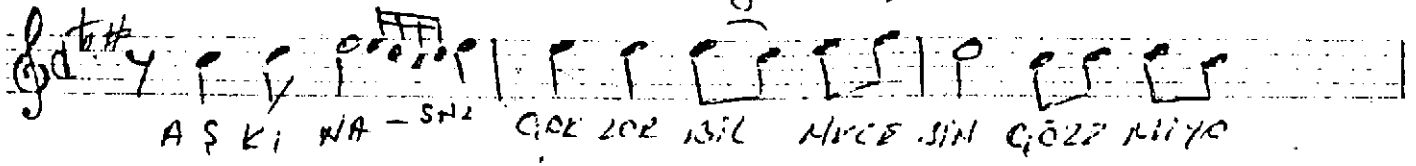
♩: 144

HÜZELAN ŞAKKI
Gözlümün karanlık gözleri gibi.

ALİ YENOLHAN
SADIK ARAY



Ahızzamı Paşke
Gözlerin karanlık geceler gibi



Gözlerin karanlık geceler gibi
Bakıpandan bir şey sezmeyorum
Kaçkın evet diyor oludafın dayın
Çok zor bitireceğin Çözemiyorum
Bazen dost bazenela elipulan gibisin
Bazen her derdime derman gibisin
Bazen ömrüme kecek bir an gibisin
Çok zor bitireceğin Çözemiyorum
Yıllardır bağlanolum . Senin aşkına
Yeter dölölölölölün yeter şaşkına
Artık bir haber ver Allah aşkına
Çok zor bitireceğin Çözemiyorum